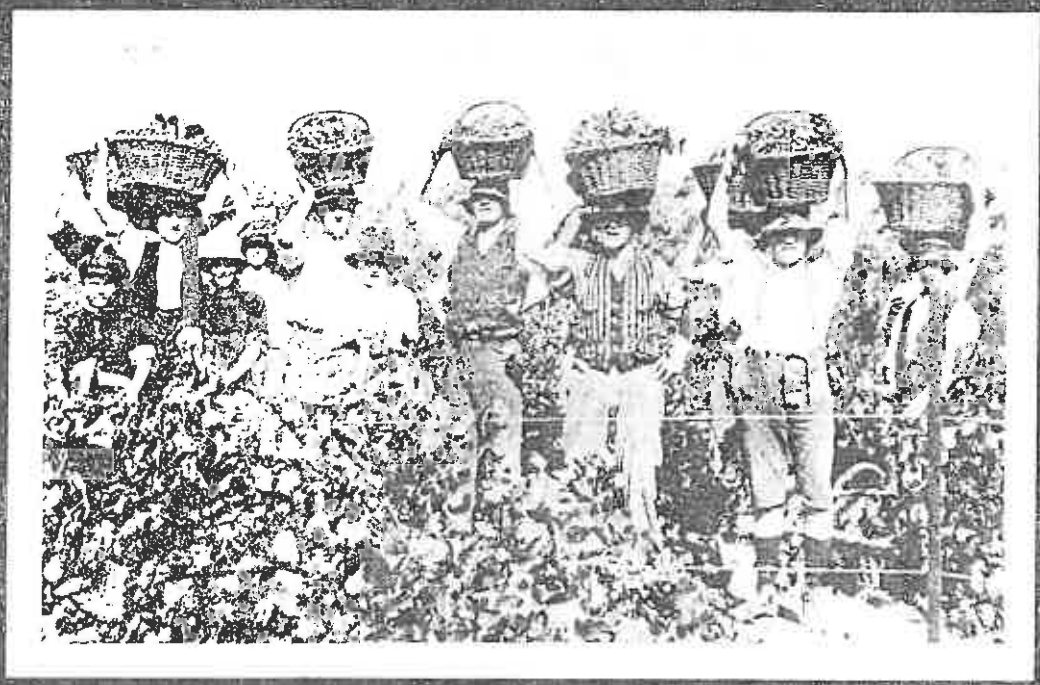


VINEYARD OF THE EMPIRE
EARLY BAROSSA VIGNERONS 1842-1939

VINEYARD OF THE EMPIRE

EARLY BAROSSA VIGNERONS 1842-1939



Aeuckens, Bishop, Bell, McDougall, Young

*Annely Aeuckens, Geoffrey Bishop
George Bell, Kate McDougall, Gordon Young*



VINEYARD OF THE EMPIRE

Hamilton's Springton

In 1858 David Randall of Glen Para, Mount Crawford purchased 242 acres on One Tree Hill Creek, east of Springton and developed his *South Rhine Estate*.¹⁰⁷ By 1873 there were 56 acres of vines on the property.

It has not been ascertained when the wine cellars were built on the Springton property but it was certainly before the property was sold to John Brodie Spence in 1871. Spence was a bank manager and in 1873 leased the *South Rhine Estate* to John Bollard Jr for 7 years at an annual rental of £178. The lease to Bollard stated that the cellars had storage for 20,140 gallons of wine, all in oak casks.¹⁰⁸

From 1876-1885 the entire crop from *South Rhine* was purchased by Oscar Seppelt and it is likely that the grapes were processed in Bollard's cellars.¹⁰⁹ In 1880 the property was leased to James Rogers, vigneron of Springton.¹¹⁰ Rogers purchased the property five years later. His son James Bowden Rogers obtained a distillation licence in 1895 and continued to operate the winery until 1916.



Hamilton's Springton winery in 1958.

The Springton winery was owned briefly by August Heinrich Diekmann before being purchased by brothers Thomas and Walter Rayner of Seaclyff in 1918. Walter Rayner acquired his brother's share in 1924 and operated the winery until 1946 when it was purchased by Hamilton's Ewell Vineyards Pty Ltd.

The style of the original cellars is not known but during the 1940s Hamiltons built up the stone walls to create a saw-tooth roof structure and corrugated iron additions were built onto the rear of the winery. The Springton winery is currently owned by R.F. Hamilton & Son.

Eden Valley

This winery was established by Penfolds in 1922, at the beginning of the dessert wine boom which occurred after the First World War.¹¹¹ It has a similar style of facade to the Southern Vales winery which Penfolds built in 1910, with a verandah with posts extending along the front of the winery facing the road, and is an excellent example of an early one-level winery.

Hamiltons Ewell Vineyards Pty Ltd bought the winery and the 105 acre vineyard in 1965 and it is consequently now owned by the Mildara Wines group; it has not been used in recent vintages.

Evandale

Henry Evans accompanied the first settlers to the Barossa region. He lived there with his family from 1836 to 1841. He was a pastoral pursuer and a vine grower, following the lead of James Ovens in viticulture.



Evandale.

Henry Evans is mentioned in the *Register* to inform that he owned between 4,000 and 5,000 vines on at least 20 acres. This was a profitable wine business, however, neglected. The type of grapes used were not specified. The cellars were built by Ebenezer Ward. He was impressed by the nursery of 10 acres of plants and trees. He is quoted in a detailed account:

We visited Ebenezer's cellar was destroyed. I believe, the largest were of stone and Muscats, and Espanoir of var